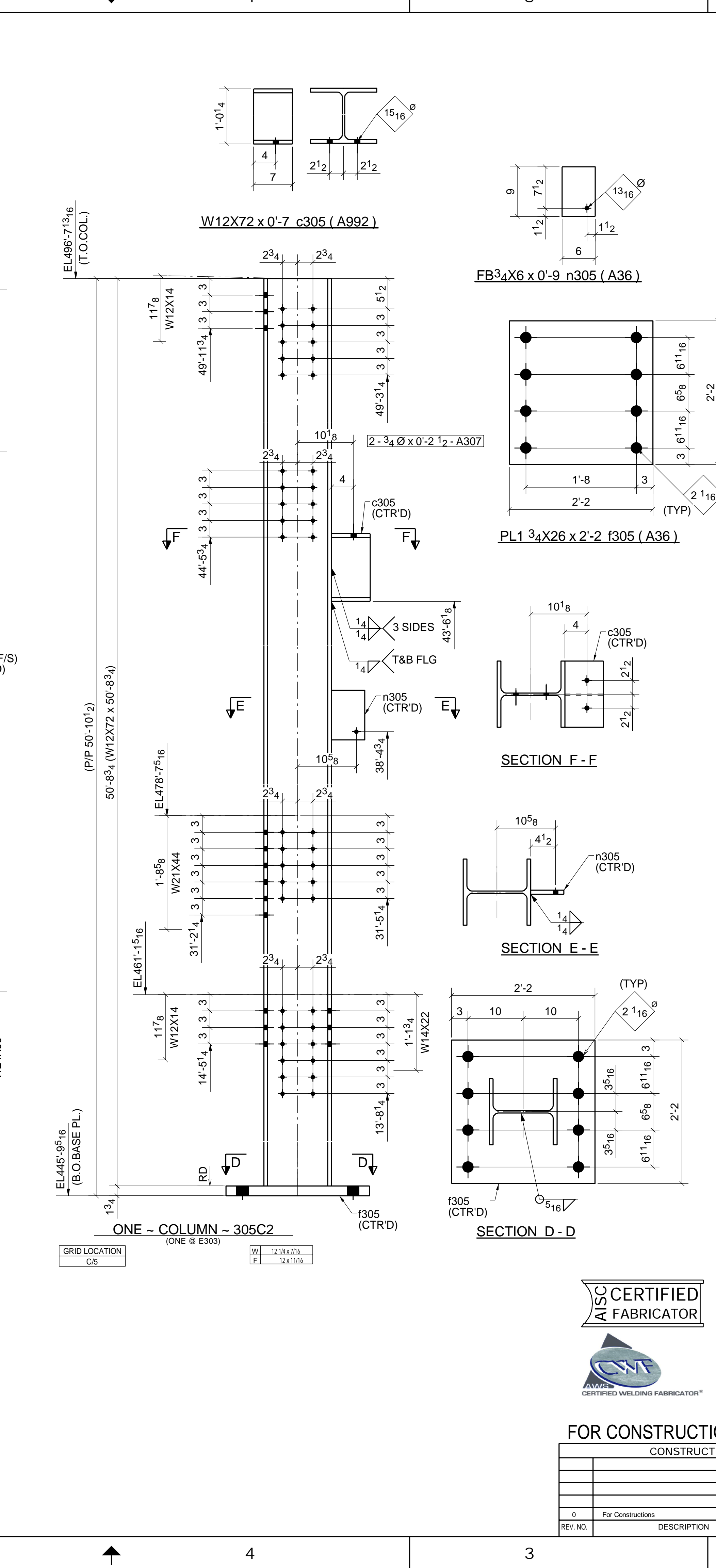
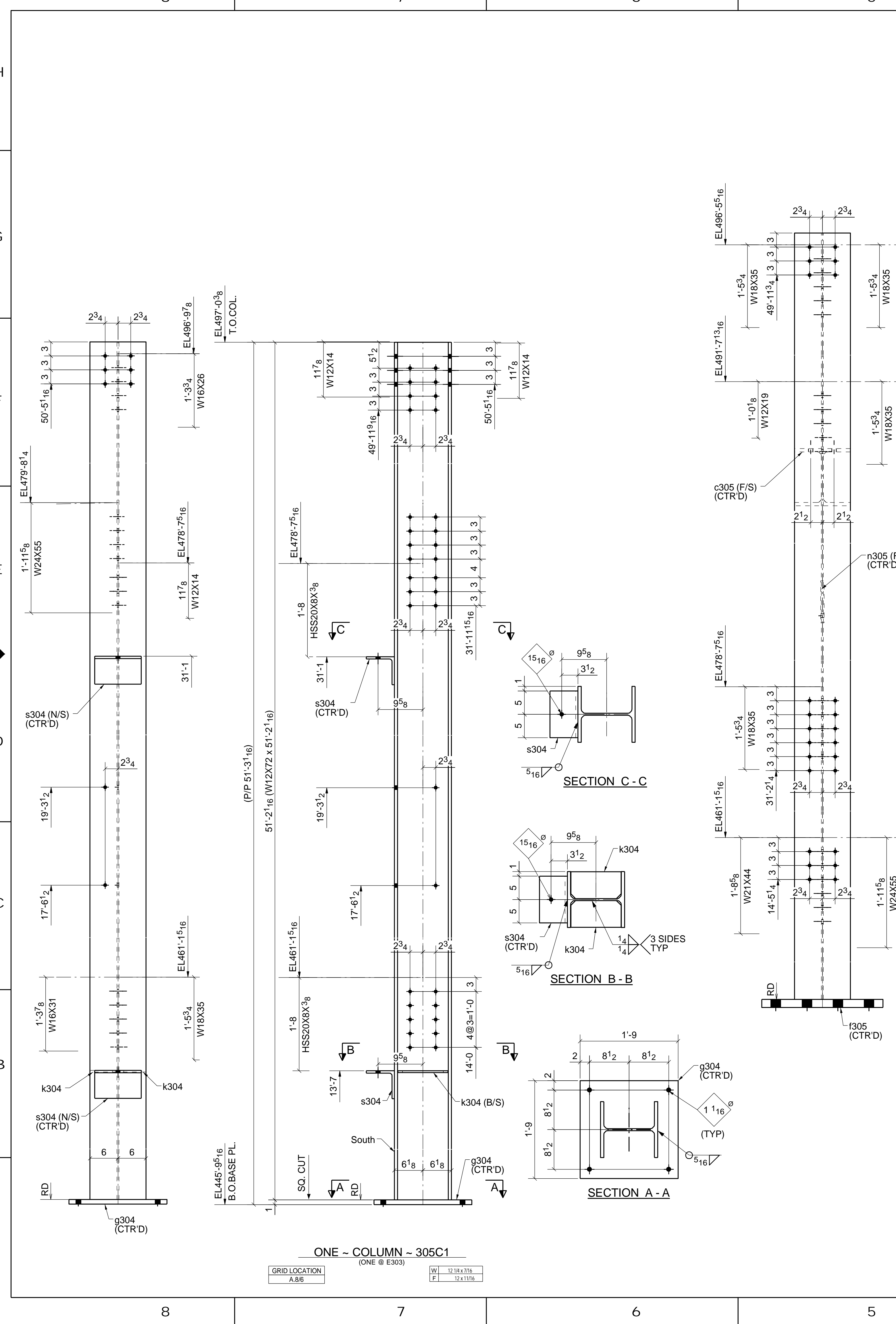


H
G
F
E
D
C
B
A



BILL OF MATERIALS						
MARK	QTY.	MATERIALS	LENGTH	PHASE	REMARKS	MATERIAL
305C1	1	COLUMN		3		
305C1	1	W12X72	51'-2 1/16			A992
g304	1	PL1X21	1'-9			A36
k304	2	PL3/8X5 3/4	0'-10 3/4			A36
s304	2	L6X6X1/2	0'-10			A36
305C2	1	COLUMN		3		
305C2	1	W12X72	50'-8 3/4			A992
c305	1	W12X72	0'-7			A992
f305	1	PL1 3/4X26	2'-2			A36
n305	1	FB3/4X6	0'-9			A36

WEEDY LAUDER

NOTE: UNLESS OTHERWISE SPECIFIED, ALL WELDING TO BE PERFORMED IN ACCORDANCE WITH AWS D1.1 WITH E7XXX LH FILLER METAL

NOTE * IMPORTANT * NOTE
We will not accept charges for labor, materials, or corrective work unless duly authorized.

CONSTRUCTION ISSUE				APPROVAL ISSUE			
REV. NO.	DESCRIPTION	MADE	DATE	REV. NO.	DESCRIPTION	MADE	DATE
0	For Construction	AJI	10/13/17	A	For Approval	AJI	08/18/17

CUSTOMER: 11085
PROJECT: 305
LOCATION: 0

SHOP NOTES
13/16 U.N.
E70XX
SURFACE PREP: SSPC-SP2 / SP3
FINISH: STD. RED PRIMER

DRAWN BY: AMU
CHECKED BY: DEE
REVISOR BY: DEE

DATE: 08/18/17
DATE: 08/18/17
DATE: 08/18/17

DATE: 08/18/17



FOR CONSTRUCTION